



# AGAPE HAND

## 2021 ANNUAL REPORT

### INTRODUCTION FROM DIRECTOR/FOUNDER



Greetings, as the report is published, the COVID 19 pandemic has spread to every count the world bringing grief, suffering, loss and chaos. At Cauday - Condebamba, at Cajamarca and Peru at large, the disadvantaged family are hurt the most. AGAPE HAND is working around the clock to ensure that the wellbeing of the community is protected. We invite you to review our results from 2021.

Thanks for well-wishers like you, we were able to achieve results for communities. We were able to change lives of more than 25 000 people, including 4327 children, 20 673 women, youth/school dropouts and many others. We started with 30 children but look were we are now, its all possible because of your generosity. The community at AGAPE HAND still needs your support than ever before

God is able of all.

.....

**Hever Aguilar Rivandeneira**

**Executive director/Founder**

# AGAPE HAND

## HIGHLIGHTS

In Cauday - Condebamba, Huanuco, Tingo Maria, Huancavelica(Chuparo), Huancayo and around La Merced, best for future lives for a world where children, youth, PWDs and women are able to improve their livelihood. A world of responsible citizens that look for opportunities, support and raise next generations.

845 women given  
a package to start  
business on small  
scale

We responded to  
20673 families  
with emergency  
relief Aid

4327 children  
access the school  
materials

451 children were  
given school  
tuition

# AGAPE HAND

## WHO WE ARE

Agape Hand is a community-based and non-governmental organization (NGO) registered under the registration number 14155122 Agape Hand was registered in 2017.

Agape Hand was purposely formed to empower vulnerable groups in the district of

Cauday - Condebamba, Huanuco, Tingo Maria, Huancavelica(Chuparo), Huancayo and around La Merced, by supporting communities such as youth, widows, people with different disabilities and the elderly. These initiatives include: child

care programs, working with groups, participation in their rights as women, youth and people with different disabilities.

Agape Hand provides assistance to individuals/groups to help them develop their individual skills while ensuring ongoing opportunities for networking, education and research. Safe and clean water, improved agricultural practices, provision of health care and emergency relief.

## WE ENVISION

Historically empowered and financially responsive citizens

## WE ARE ON MISSION

Deliver communities from spiritual bankruptcy through giving them necessary skills and crucified with a keen sense of commitment

## OUR VALUES

Our values are a meaningful indispensable part of our day to day operations.

**Commitment to relationships and collaboration:** We established lasting relationship based on mutual trust. We celebrate excellence in others and seek to support them in achieving their goals.

# AGAPE HAND

**Responsiveness and relevance:** We respect and are sensitive to the uniqueness of every community, organization and individual with whom we work and develop customized approaches for their specific needs.

**Radical innovation with structured execution:** with passion and optimism, we always look for better ways of doing things; challenging the status quo and disrupting the usual while ensuring smooth and timely execution.

**Integrity:** We serve with the light level of personal, professional and ethical standards.

We uphold our values, mission and vision with no compromise.

**Continuous improvement:** we are a learning organization that sets to develop and improve continuously in order to constantly meet or exceed the expectations of those we serve.

## WE BELIEVE

Children and youth from all backgrounds can attain high achievements and go on to be successful contributing adults in different roles and careers given the right environment and support.

Character is ultimate success factor and prerequisite for enduring sustainable development. Lastly success in life build on a solid foundation of sound character.

Sustainable social impact and transformation must start at grass root level and lean on people driven efforts. Thus communities targeted groups the tools and support they need individually and collectively take responsibility and play an active role as part of the solution to their own problem.

Collaboration for stronger outcomes. There is power in our collective action when we bring out strength, talents, skills, experience and resources together in collective action our impact will be lastly and powerful.

# AGAPE HAND

## OBJECTIVES

- To assist and guide community members to establish income-generating activities that will enable them to earn income and improve their livelihoods.
- To empower communities, children, women, disabled, etc. to exercise their rights through education, social awareness and rights through collective action and change programs.
- Provide relief items to vulnerable groups, i.e. food, clothing and health kits.
- Investigate the social and economic situation of communities and the effectiveness of response to situations.
- Provide communities with clean and safe water through the use of potential technologies.
- Encourage vulnerable groups to participate in ongoing environmental protection and conservation efforts.
- Reach out and preach the word of God to communities through broadcasting, seminars, door to door, open air and evangelism.
- Establish an academy that creates vocational training opportunities for women, the disabled, and schooled and unschooled youth to equip them with the skills necessary for job creation.
- Provide psychosocial support and any kind of material assistance to vulnerable people with or without disabilities and their affected families.

## OUR ACHIEVEMENTS

This past year we have managed to achieve tremendous results. In 2021 we managed to support 100 women who received a package to start a small-scale business, we responded to 100 families with emergency assistance, 200 children accessed school materials.



# AGAPE HAND



Some of our 80 children having lunch at their home Cauday – Condebamba

## PROJECT HIGHLIGHTS



This is one of the pioneer projects for Agape Hand. Some of our children Receiving school materials in 2022



# AGAPE HAND



Thanks to our allies, donors and volunteers, we were able to supply basic foodstuffs in Cauday - Condebamba.





# AGAPE HAND



Agape Hand continuously strives to distribute food baskets to the poor and needy.



# AGAPE HAND



While COVID 19 continued to hit us hard, Agape Hand was able to draw down some funds and responded to 20673 families with





# AGAPE HAND

FOOD DELIVERY TO CHILDREN IN EXTREME POVERTY WHERE A FAMILY MEMBER SURVIVES ON 1.22 CENTS USD PER DAY

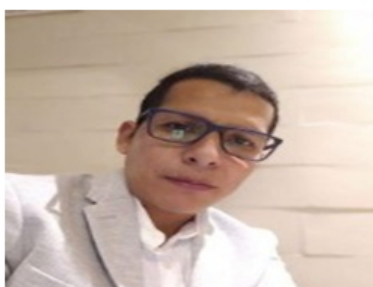
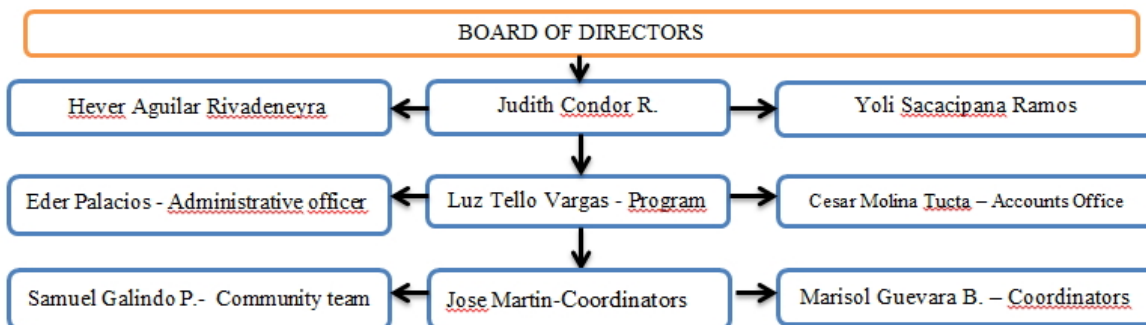


Some of the youth after training in livelihood projects. We were also happy as Agape Hand.

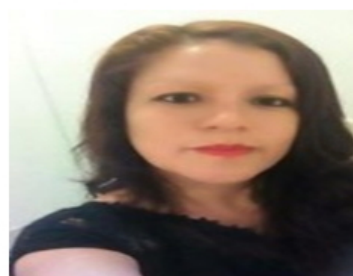
## ORGANIZATION ACTIVITIES

- Zero Hunger
- Education and training
- Agricultural improvement
- Environmental protection
- Relie

## ORGANIZATION STRUCTURE



**Hever Aguilar Rivadenevra**



**Judith Condor R.**



We had the pleasure of working with and being supported by a wide range of exceptional individuals, technical, organizations and well wishers.

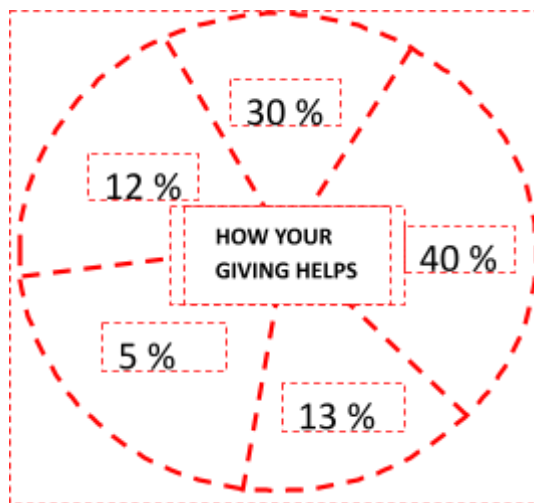
We wish to thank our amazing staff, volunteers for their hard work and dedication to Agape Hand over the last year.

Offering a vast range of expertise and a passion for helping the most vulnerable Peruanos children, we are especially grateful for their contribution.

Thank you.

## FINANCIAL OVERVIEW

Shown below is a summary overview of our finance for 2021. Through generous support and fundraising, we were able to support over more than 1000 people. This includes beneficiaries i.e women, children, school dropouts, communities and employments.



- 40% Food
- 30% Education
- 12% Relief
- 5% Agricultural improvement
- 13% Environmental protection

## HOW OUR WORK IS FUNDED IN CONTEXT

- Membership subscription fee 25% development
- Fundraising 43% Humanitarian
- Sponsorships
- Donations/grants/gifts

## WHERE YOUR GIVING GOES

Programs/projects  
Management and general

# AGAPE HAND

## PENDING/CRUCIAL PROJECTS 2021

1. Fundamental and crucial sponsorship of our proposed new website, including website hosting, domain and web development. This will help Agape Hand create more awareness and utilize payment gateways such as Stripe, PayPal, MasterCard, Visa, American Express and [Cryptocurrencies](#) as convenient payment for individual businesses who are willing to support our work for those less fortunate and who urgently need our help for survival.
2. Agape Hand is in desperate need of [sponsorships/donations](#) and funding Programs for underprivileged children/youth (approximately 400 youth, ages 1-16). Desperately needs funding for education, school supplies, food, clothing, blankets, mattresses, health supplies, medical expenses and other essential needs (Ongoing annual projects).
3. Support 845 women to start small-scale businesses (ongoing annual project). Build a home for underprivileged children who have no shelter. Agape Hand can only take in up to 110 orphans. However, we are taking in up to 400 orphans, which creates massive overcrowding. There is not enough sleeping space, mattresses or sanitation.

## HUMAN RESOURCES POLICY FOR STAFF

Agape Hand's policy is to provide equal development opportunities to qualifie individuals, regardless of race, color, region, ancestry, sexual orientation or any other legally protected class, in accordance with all applicable laws. This commitment extends to the organization that is Agape Hand, including but not limited to recruitment, hiring, promotion, training, compensation, discipline and termination and to all terms, benefits, privileges and conditions of employment. Discrimination and violation of this policy are prohibited and will not be tolerated.

## TARGET GROUPS

Disadvantaged groups, such as orphans, youth, widows, the elderly and people with various disabilities, as well as youth and school children. Members of the local community.

## BANK DETAILS

<b>BANK NAME</b>	<b>INTERNATIONAL BANK OF PERU</b>
Account Name	AGAPE HAND
Account Number	6453003738741
Swift Code	BINPPEPL
Country	PERU